

## Notice sheet

---

---

### ***For Microsoft® Windows® XP Users***

Note for installing the printer software

In addition to the EPSON printer driver, the Microsoft printer driver may also be automatically installed. If this occurs, EPSON recommends using the EPSON printer driver. The EPSON printer driver contains the word *Advanced* after the printer name.

Example:

[EPSON printer driver] AL-C2000 *Advanced*

[Microsoft printer driver] AL-C2000

### For All Laser Printer Users

The EPSON Status Monitor 3 utility is not available when printing from a Remote Desktop connection.

### For AL-C1000, AL-C7000, EPL-1220 and EPL-5900L Users

- Printing from a Remote Desktop connection is not possible.
- Shared printer: When printing from a client via a server running Windows XP, there is a possibility that EPSON Status Monitor 3 will indicate a communication error or that printing will not be possible. In these cases, restart the server.
- Shared printer: If printing is not possible from a client via a server running Windows XP, confirm that the server is set up as outlined below.

### For Windows XP Professional Users

1. Click Start, then click Control Panel, then click Printers and Other Hardware, then click Printers and Faxes.

2. Right-click the icon for your printer, then click Properties.
3. Click the Optional Settings tab, then click Driver Settings.
4. Confirm the Spooling Folder path.
5. Click Start, then click My computer.
6. Right-click the folder that is set as the Spooling Folder, then click Properties.
7. Click the Security tab, then click Add. Click Advanced in the Select Users or Groups dialog box.

**Note:**

*If the Security tab is not displayed, click Folder Options on the Tools menu. Click the View tab, then clear the Use simple file sharing (Recommended) check box.*

8. Click Find Now, then select Everyone from the Name [RDN] list, then click OK.
9. Click OK to close the Select Users or Groups dialog box.
10. Select Everyone from the Group or user names list. Next, select Allow for both Read and Write in the Permissions for Everyone list.
11. Click OK.

For Windows XP Home Edition Users

1. Click Start, then click Control Panel, then click Printers and Other Hardware, then click Printers and Faxes.
2. Right-click the icon for your printer, then click Properties.
3. Click the Optional Settings tab, then click Driver Settings.

4. Make sure that the Spooling Folder path is as follows:

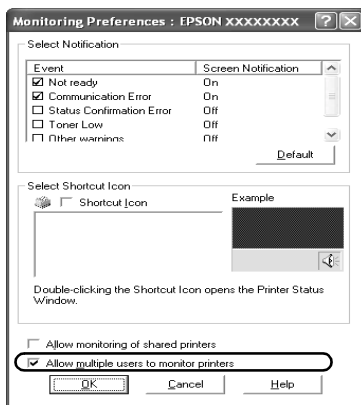
C:\documents and settings\all users\Documents



5. Click OK.

For AL-C1000, AL-C2000, AL-C7000, EPL-1220 and EPL-5900L Users

If the Monitored Printers settings are not available on a computer set up for multiple users, make sure that the Allow multiple users to monitor printers check box is selected in the Monitoring Preferences dialog box.



### For NetWare Users

When monitoring NetWare printers, a Novell Client that corresponds to your operating system must be used. Operation is confirmed for the versions below.

- ❑ For Windows Me/98/95: Novell Client 3.3.1 for Windows 95/98
- ❑ For Windows 2000/NT 4.0: Novell Client 4.8.1 for Windows NT/2000

(This information is current as of March, 2002. For the latest information, please see the Readme file.)

### ***For Windows Shared Printer Users in a Windows Me/98/95 Environment***

On the server, double-click the Network icon in Control Panel and make sure that the "File and printer sharing for Microsoft Networks" component is installed. Then, on the server AND clients, make sure that the "IPX/SPX-compatible Protocol" or the "TCP/IP Protocol" is installed.

### ***For AL-2000, AL-C4000, AL-C8600, and EPL-N2050+ Users***

EpsonNet WebManager version 2.5a and later does not support Windows 95.

### ***For AL-C2000, EPL-N2050+ and EPL-N2120 Users***

The Printer Status Page utility is not available.

### ***Correction to the Reference Guide***

The following limitation no longer applies to the AL-C2000 and EPL-1220/5900/5900L:

When the IPX/SPX compatible protocol setting is turned on in Windows Me/98/95, and the EPSON Status Monitor 3 utility is installed, you may have a communication error. To avoid this error, disable the IPX/SPX compatible protocol.